

**THE  
FUTURE  
IS  
HERE!**



**sumai**  
PRE HUNG DOORS

***Spacewood & Sumitomo Forestry Group Joint Venture***



# Because First Impression Matters!

***An autograph of lifestyle***

*Warm and inviting*

*Technically sound* ***Beautifully finished***

***Stable, Durable and Secure***

***Complements other interior solutions*** *Hassle free maintenance*

# Introducing a phenomenon for complete door solutions:

India's Largest Manufacturer  
Of Modular Furniture For 20 Yrs +

Japanese Expertise  
Since 1980's

= ***SUMAI, the ideal door solution***

In a market dominated mostly by traditional doors and frames, Spacewood and Sumitomo Forestry Group have come together to offer a unique solution in the form of Sumai doors.





sumai

DOOR SOLUTIONS FOR THE 21ST CENTURY

### ***Olefin finish***

- = Rich Looks
- = Range of Styles and Designs
- = Durable and Long Lasting

**Traditional  
Doors**

**Engineered  
Wood**

**Engineered  
Solution**

### ***Engineered Wood***

- = Green: meets E-1 Emission Norms
- = Consistent Quality
- = Termite Proof



**Olefin  
Doors**

**Factory  
Finished**

**Sumai  
advantage**

### ***Factory Made & Finished***

- = Suited for Large Volume Projects
- = Consistent Quality
- = Meets International Standards

### ***All Weather Friendly***

- = Structurally Stable in Dry/Wet Weather
- = No Bending or Warping
- = Maintenance Free



# Olefin: Changing the world of door solutions

## **21st Century Solution for Veneer Doors**

Olefin is the preferred solution in Japan for Veneer look doors

## **Rugged and UV Stable**

Suited for long life of doors

## **Natural Looks**

Soft feel, better suited for interior products

## **Wide Range of Finishes**

Available range of 16 wood texture colours





# Doors & Frames: Matched To Perfection

## **Process determines Quality**

Extensive learning from Japanese collaborators

## **Best in class Equipment**

Dedicated door manufacturing equipment brought from Europe and Japan

## **Ralii Frames**

Unique designs available in matching finish

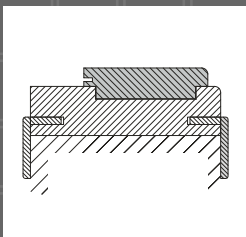
## **Pre - fitted Hardware**

Preps also possible to ensure long trouble-free service

# Precisely Engineered

## *Construction Benefits:*

- Only wood substitutes used for higher strength and consistent quality
- Core made of Tubular Particle Board for very high impact strength (better than baton filling)
- Stile and Rail made with LVL, cross-band is HDF
- HF press with D4 glue for better surface finish and BWP properties
- Door panel sealed against moisture ingress on all 6 sides using 2mm matching edge bands
- Door frame is made with LVL and is far stronger, as anchor bolts hide behind door stop
- L-shape architrave allow for 10mm size variation



*An Eco Friendly Green Project Initiative possible with use of innovative techniques and materials.*





# Beautifully Designed

## *Pre-hung Engineered Door Set:*

Pre-hung implies that door panel, frame, architrave, hardware and accessories are shipped together as a matched-set, much like other furniture items.

## *Far Better Fit and Finish:*

Door frame and panel have matching looks as they come from one source and are manufactured together as a set.

Finishes used on door and frame are mostly identical.

## *Radii Frames:*

Unlike routed L-shape frames, engineered frames have a separate door stop which greatly enhances looks.

Radii and Chamfer frames offered give a soft look and are wrapped with matching Olefin or CPL.

## *Designer Doors in different Styles and Finishes:*

Designer doors have a different engineering construction and do not follow carpentry methods.

## *On offer—Sumai Hardware:*

All doors come pre-fitted with rounded hinges which nest more easily and work longer. Sumai locks, handles and other minor hardware is available which can be fitted and tested at factory before dispatch.



# Product Range



**lori**

**Zen**



Hi - tech materials with unusual personality



**Sugoi**

**Nozomi**



# Product Range



**Ishin**

**Hibiki**



Clean lines, contemporary look





**Mori**

**Hoshi**



# Product Range



**Hikari**

**Kirei**



Timeless elegance that blends with any furnishing style



**Shinka**

**Mirai**





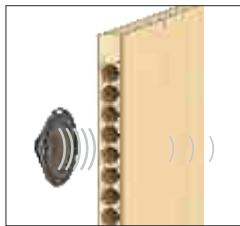
# The Sumai Edge

*Sumai doors are synonymous to good doors:*

- Using our Tubular particle boards cover the following needs of doors:



Impact Resistance



Sound Insulation



No Bending

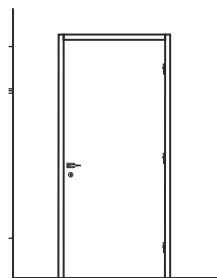


Fire Resistance



No Telegraphing

- Size Specifications:

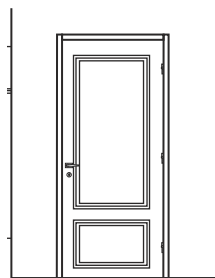


Flush Doors

Thickness:  
36mm, 44mm

Height:  
7', 7.6', 8'

Width:  
2.6', 3', 3.6', 4'



Designer Doors

Thickness:  
36 mm

Height:  
7', 7.6', 8'

Width:  
2.6', 3', 3.6'

Construction  
available in:

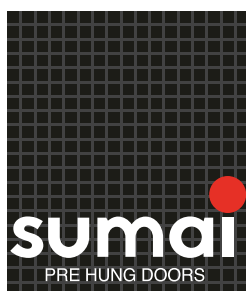
1. Single Leaf
2. Double Leaf
3. Glass Window

- Best European engineered wood used as raw materials
- CPL benefits and facilitates to design in curved shapes
- Use of HDF / Plywood in cross-band
- Olefin used is 4H hard, which protects against UV radiation
- Stile, rail that is made in LVL, has high strength compared to natural wood
- Use of Telescopic adjustable architraves, that can accommodate variation in wall thickness
- Designer frames available in radii and chamfer
- Matching edge band allows smooth handling making it injury free
- Product complies to Green Credentials - E1
- Our quality tests comply to IS 2202
- Hardware machining is accurate and precise, as done on CNC machines
- Hardware offerings: Locks, Handles, Hinges, Minor Hardware

A photograph of a light-colored wooden door with a vertical metal rod running through its center. The door is set against a white wall. A large, semi-transparent red diagonal shape overlays the right side of the image, extending from the top right corner towards the bottom left.

***We welcome you to the world of  
upgraded engineered door concepts.***

*Find your perfect match from a range of variants, surface  
finishes and accessories available in the Sumai collection.*



#### BRANCH OFFICES:

<b>NORTH</b>	DELHI: 23-24, 1st Floor, JMD Regent Arcade, MG Road, Gurgaon - 122001, T: +91 124 4015775.
<b>SOUTH</b>	<p>BENGALURU: # 443, "V. P. Arcade", 1st Block, 5th A Cross, 9th B Main Road, HRBR Layout, Kalyan Nagar, Banaswadi, Bengaluru - 560043, T: +91 80 41553363.</p> <p>CHENNAI: 5/602, Old Mahabalipuram Road, Perungudi, Above Union Bank of India, Perungudi, Chennai - 600096, T: +91 44 43153666.</p> <p>HYDERABAD: 1-57/69/1/133, Gachibowli Main Road, Sherlingampally, Hyderabad - 500032, T: +91 40 23001050/60/70.</p>
<b>WEST</b>	<p>MUMBAI: 1st Floor, "KSL House", 11/12, Raghuwanshi Mills Compound, Senapati Bapat Marg, Lower Parel (W), Mumbai - 400013, T: +91 22 24967979/9898.</p> <p>PUNE: 1st Floor, Farena Corporate Park, Magarpatta - Kharadi Road, Above Kotak Mahindra Bank, Opp. Amanora Town Center, Magarpatta, Pune - 411013, T: +91 20 65323242.</p>
<b>EAST</b>	<p>KOLKATA: Arcadia Center, 31 Ambedkar Sarani, Topsia, Opp. Vishwakarma Building, Kolkata - 700046, T: +91 33 22850071/72.</p> <p>RANCHI: 2nd Floor, Maalakshmi Plaza, Vasant Vihar, Sahajanand Chowk, Harmu, Ranchi - 834002, T: +91 651 2201059</p>
<b>FACTORY</b>	<p>Plot. No. SZ-25-1, MIDC Industrial Area, Butibori, Nagpur - 441122 (India)</p> <p>E: <a href="mailto:marketing@spacewood.in">marketing@spacewood.in</a>, <a href="http://www.spacewood.in">www.spacewood.in</a></p>

#### DEALER

**Spacewood & Sumitomo Forestry Group Joint Venture**